

Auto Faces Split Training

Auto Faces Split_Training.zip



Auto Faces Split - Overview

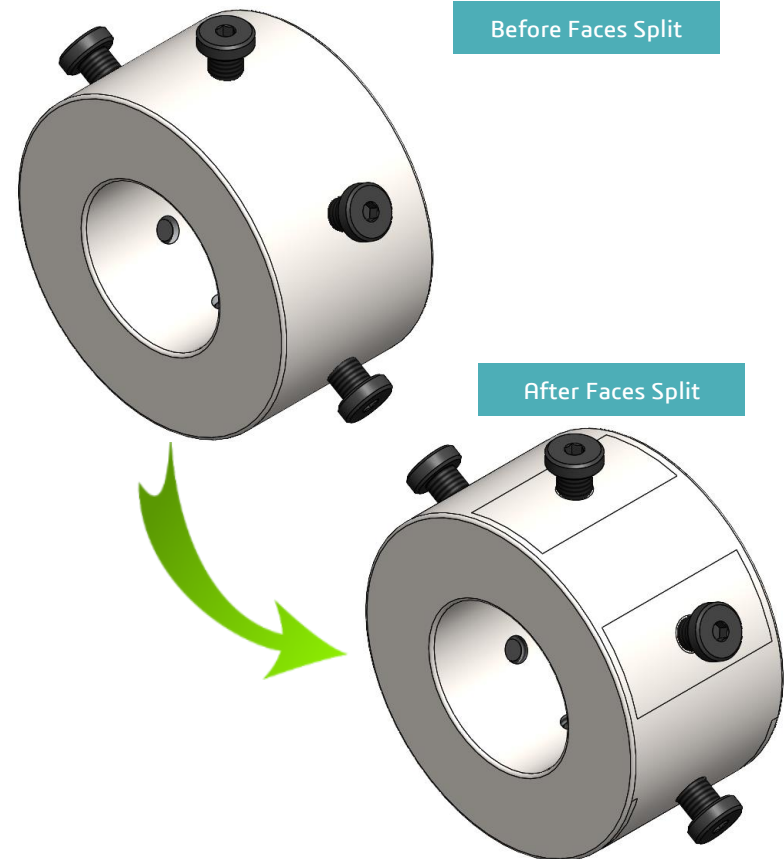
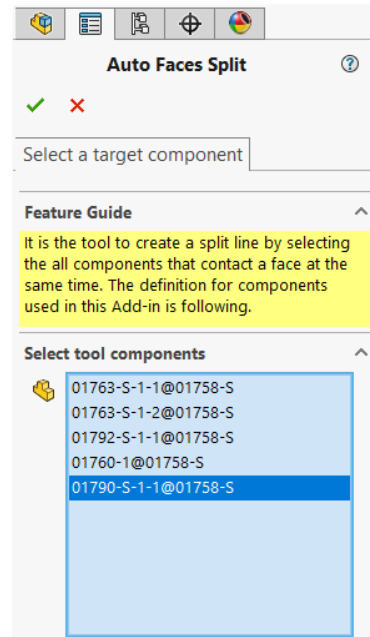
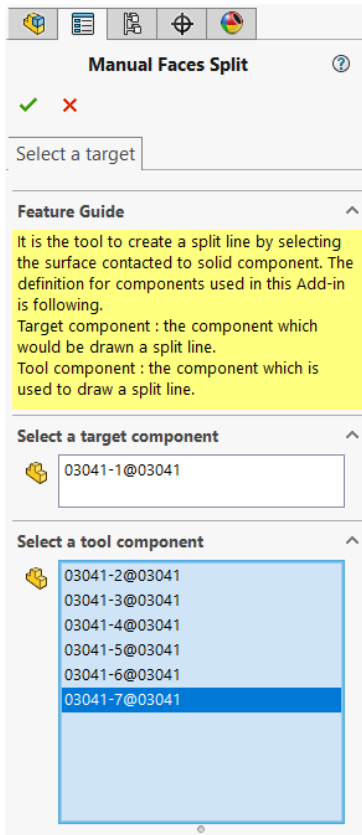
Main Functions

- Creating batch split lines and analyzing of faces that contacting multiple components

Benefits

- Save preprocessing time by automating preprocessing for analysis
- Reduces human error by eliminating the designer's direct editing work for the model split line

Course Objective: Follow the simple step-by-step instructions and learn how to use Auto Faces Split

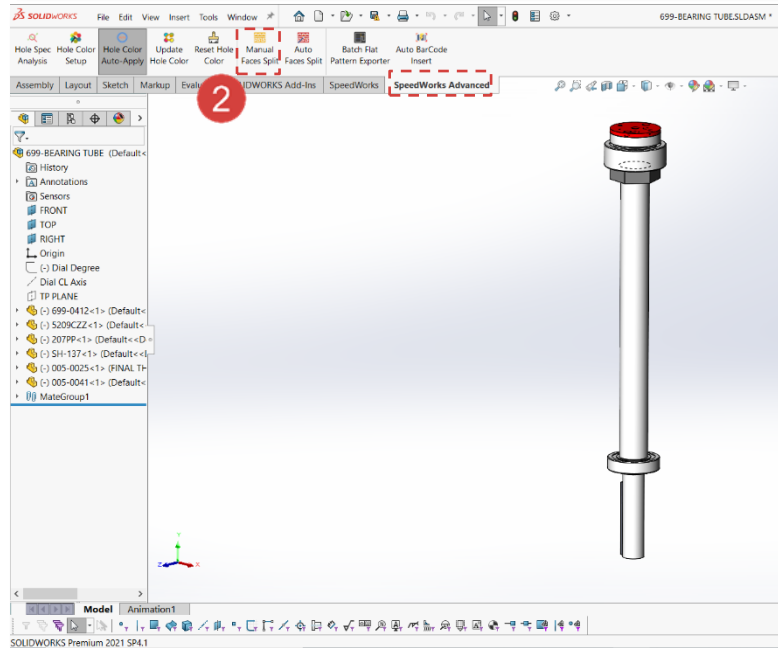
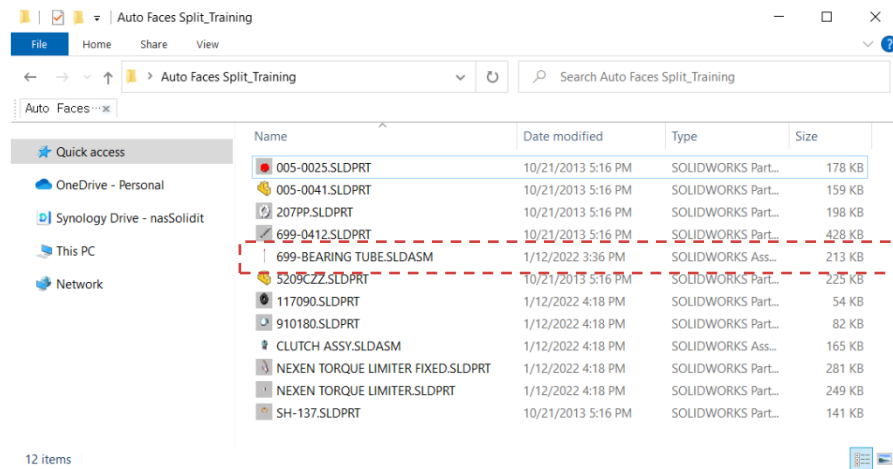


Auto Faces Split - Manual Faces Split Execute

Work on the part with the red circle (1) following instructions by yourself.
The part with the black square (1) is an additional explanation or a reference.

1 Execute **699-BEARING TUBE.SLDASM** file in sample files.

2 Click **[SpeedWorks Advanced]** tab - **[Manual Faces Split]** button to execute function.



※ You can download example files at Support page in SpeedWorks Homepage(<https://speedworks.info>).

Auto Faces Split - Add Components

Work on the part with the red circle (1) following instructions by yourself.
The part with the black square (1) is an additional explanation or a reference.

1 Select **699-0412.SLDPRT** in target component selection.

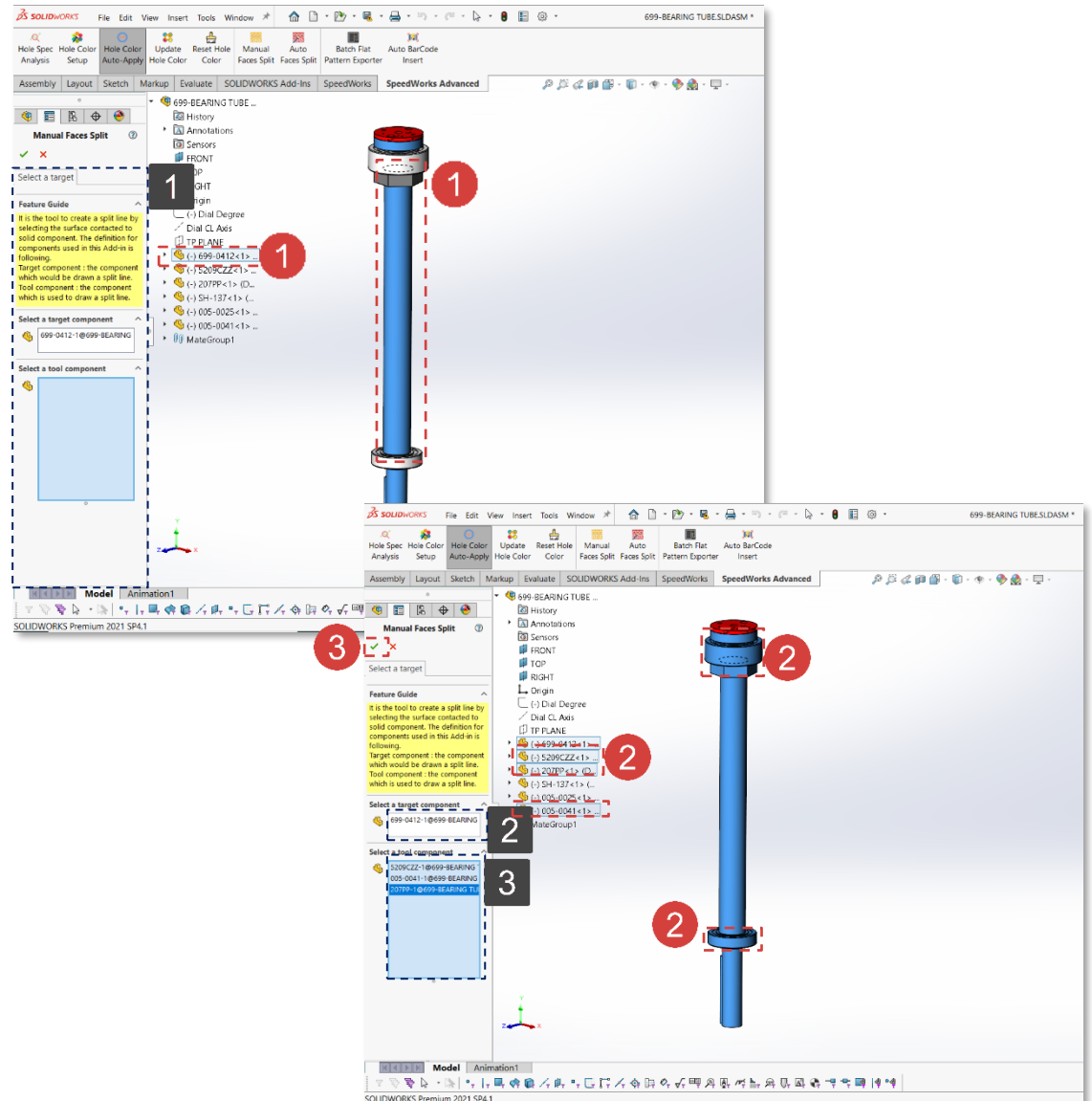
2 Select **5209CZZ.SLDPRT**, **005-0041.SLDPRT**, **207PP.SLDPRT** in dividing component selection.

3 Click **[Check]** button.

1 This is Manual Faces Split screen.

2 The component that insert split line.

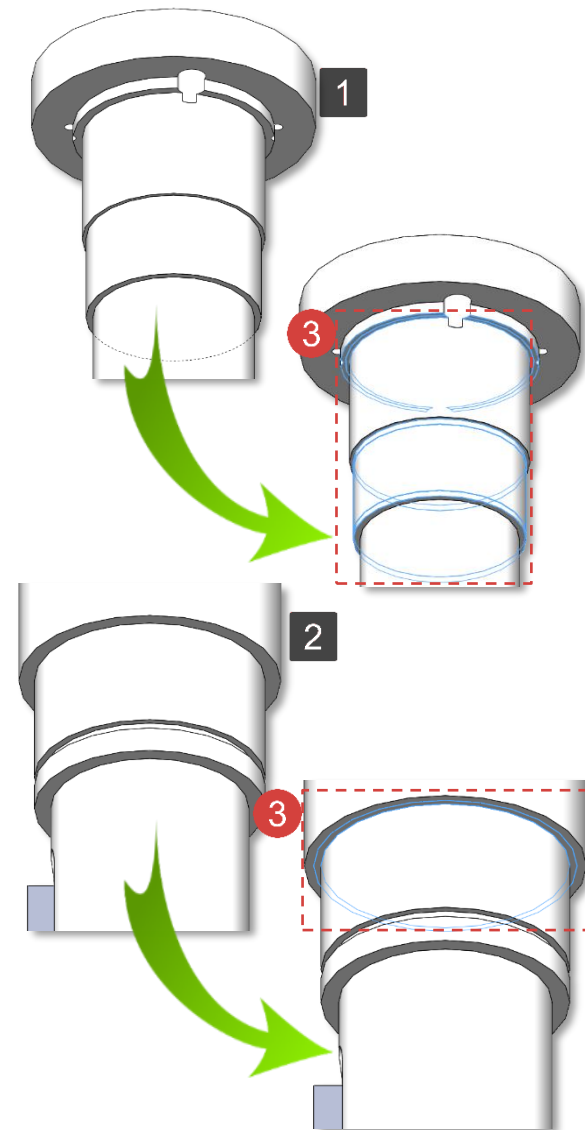
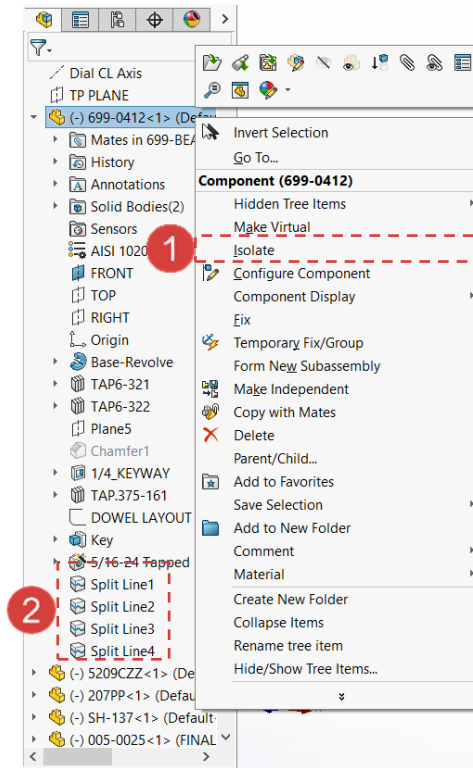
3 It is components that used to create split line into **[Select a tool component]**.



Auto Faces Split - Result of Manual Faces Split

- 1 Mouse right-click **699-0412.SLDPRT** file, and click **[Isolate]**.
- 2 Split line has been created on feature tree of **699-0412.SLDPRT**.
- 3 The split line has been inserted into the of **699-0412.SLDPRT** file.

- 1 The top of the **699-0412.SLDPRT** part file is zoomed in, with the inserted **split line feature(Split Line1,2,3)** selected.
- 2 The bottom of the **699-0412.SLDPRT** part file is zoomed in, with the inserted **split line feature(Split Line4)** selected.

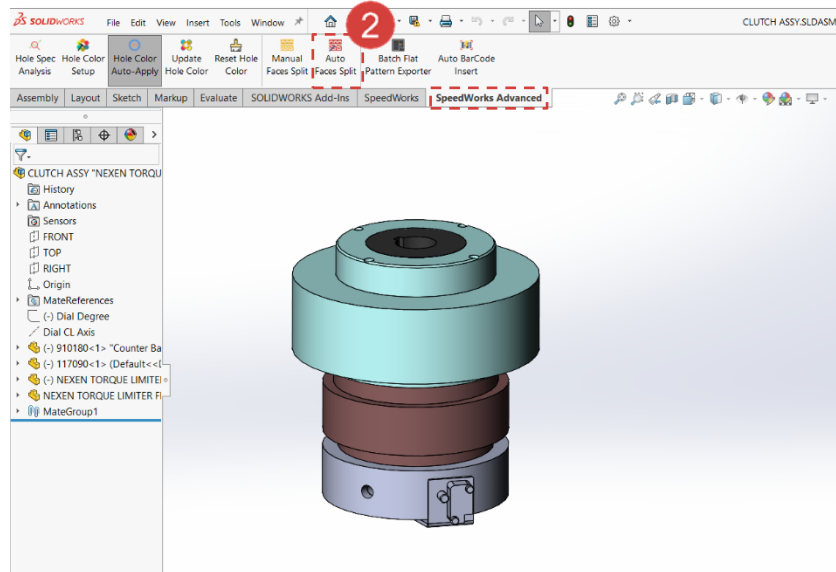
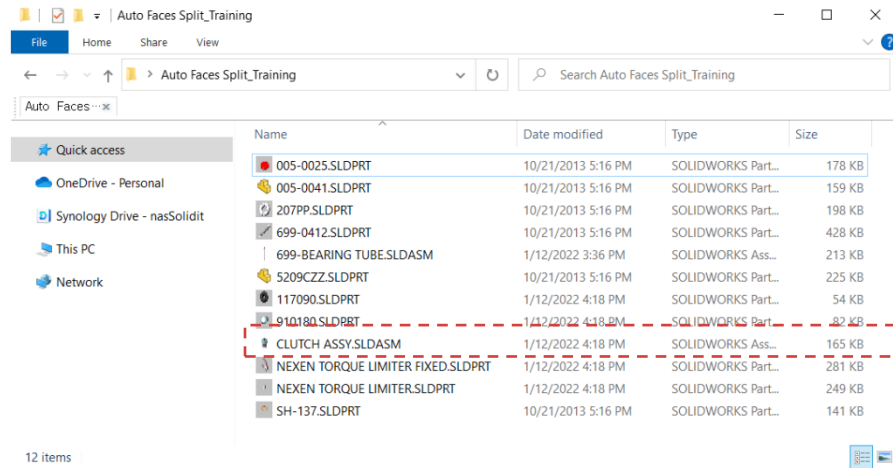


Work on the part with the red circle (1) following instructions by yourself.
The part with the black square (1) is an additional explanation or a reference.

Auto Faces Split - Auto Faces Split Execute

Work on the part with the red circle (1) following instructions by yourself.
The part with the black square (1) is an additional explanation or a reference.

- 1 Execute CLUTCH ASSY.SLDASM file in sample files.
- 2 Click [SpeedWorks Advanced]tab – [Auto Faces Split] button to execute function.



Auto Faces Split - Component Add

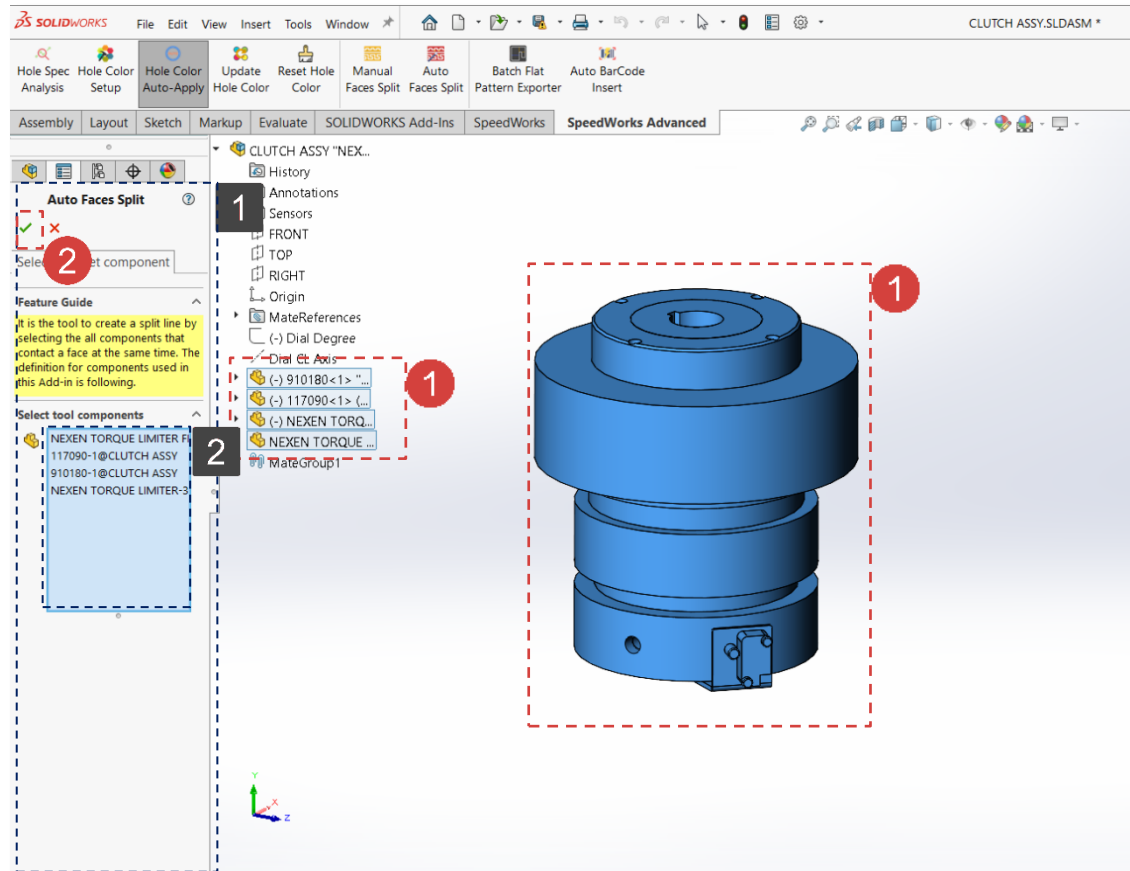
Work on the part with the red circle (1) following instructions by yourself.
The part with the black square (2) is an additional explanation or a reference.

1 Select 910180.SLDPRT, 117090.SLDPRT, NEXEN TORQUE LIMITER.SLDPRT, NEXEN TORQUE LIMITER FIXED.SLDPRT files.

2 Click [Check] button.

1 This is Auto Faces Split Faces screen.

2 Parts to insert split line, insert split line on the faces in contact between selected parts.



Auto Faces Split - Result of Auto Faces Split

Work on the part with the red circle (1) following instructions by yourself.
The part with the black square (1) is an additional explanation or a reference.

- 1 Split line of 910180.SLDprt has been created.
- 2 Split line of NEXEN TORQUE LIMITER.SLDprt has been created.
- 3 Split line of NEXEN TORQUE LIMITER FIXED.SLDprt has been created.

- 1 910180.SLDprt with the part isolate and the inserted split line feature selected.
- 2 NEXEN TORQUE LIMITER.SLDprt with the part isolate and the inserted split line feature selected.
- 3 NEXEN TORQUE LIMITER FIXED.SLDprt with the part isolate and the inserted split line feature selected.

